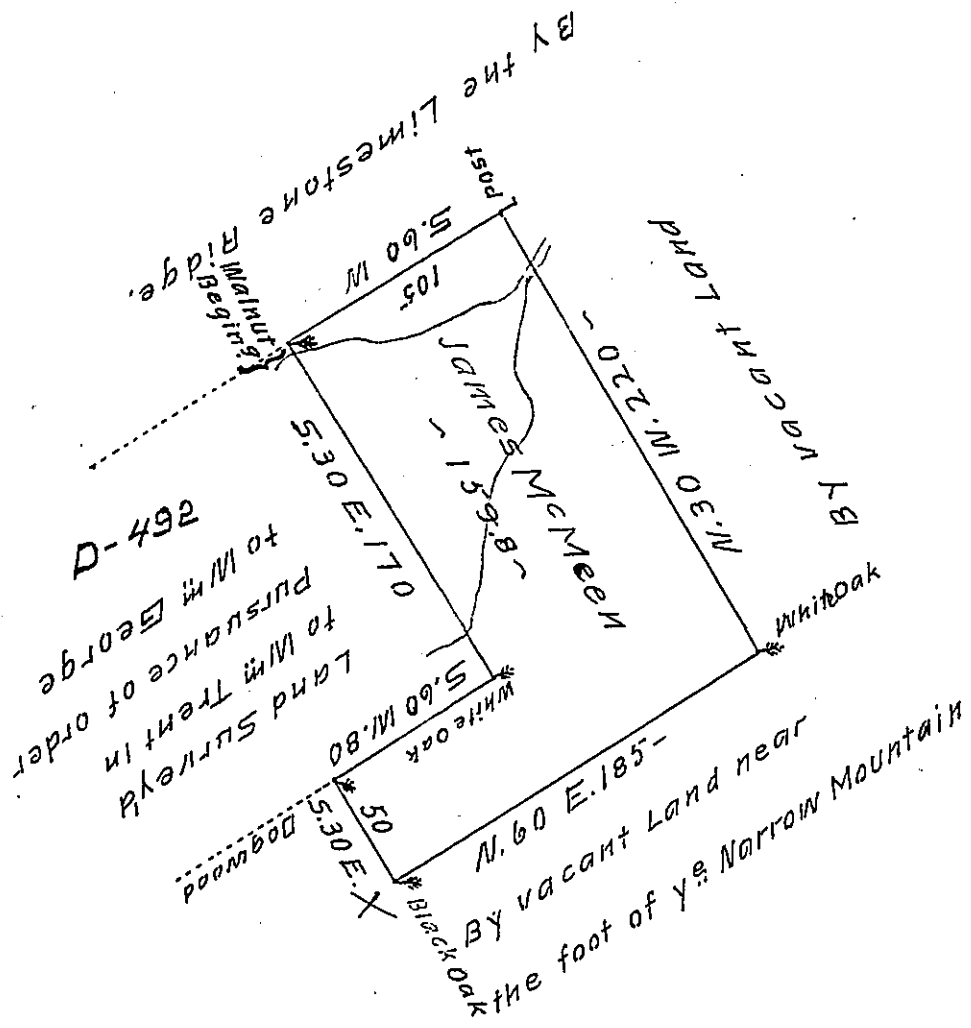


FORM NO 1.



The Draught of a Tract of Land called ~~situate~~ situate on one of the Head Branches of Middle Creek in the County of North -
 UMBERLAND containing One hundred and fifty Nine Acres 133
 Perches with the usual allowance of six Acres $\frac{1}{2}$ Cent. for
 Roads Survey'd the 23^d day of April Anno Dom: 1772 in Pur-
 suance of an Order of Survey to James McMEEN bearing date
 at Philad^a the 2^d day of May Anno Dom: 1767 and numbered
 3574 ↗

W^m Maclay D.S.

To John Lukens Esq. S.E.
 of Pennsylvania }

IN TESTIMONY that the above is a copy of the original remaining on file in
 the Department of Internal Affairs of Pennsylvania, made
 conformably to an Act of Assembly approved the 16th day of
 February, 1833, I have hereunto set my Hand and caused
 the Seal of said Department to be affixed at Harrisburg,
 this 21st day of Oct. 1907

Henry Howard
 Secretary of Internal Affairs.